



Taralay Impression

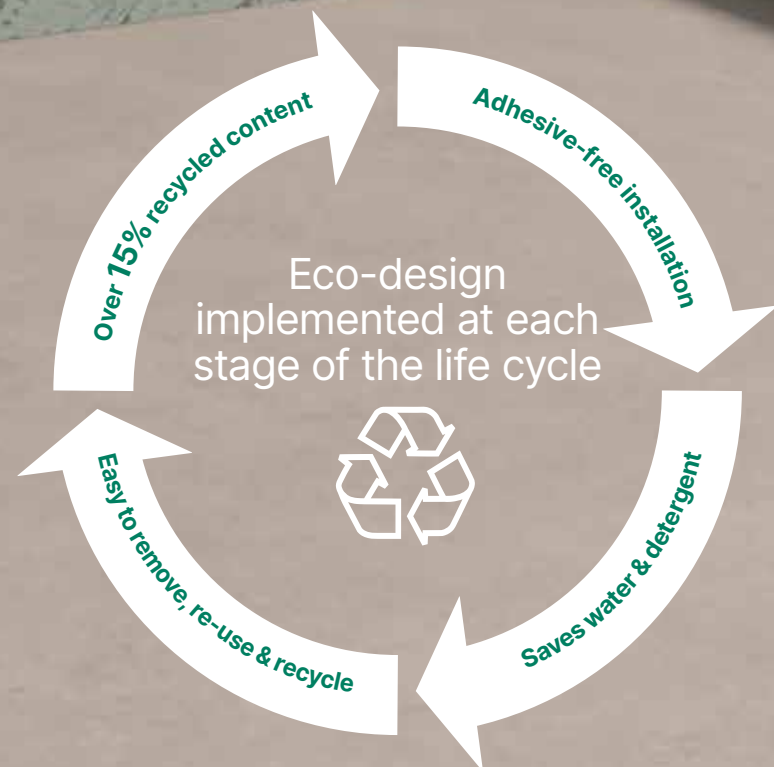
A unique, stunning and eco-friendly collection, designed just for you

Gerflor[®]

Taralay Impression hop

New & exclusive!

The looselay solution, easier, quicker... and eco-cycle friendly



Looselay
means **more projects** finished faster even in **busy environments**, with less disruption by dust, smell and noise.



All colours available in ACOUSTIC 19dB & COMPACT 8dB



Taralay Impression hop colours available in stock

Others colours on order minimum 700 sqm

SAMPLES



MADE IN EUROPE

Discover Taralay Impression,

The reference for all high traffic areas

a unique, stunning

96 DESIGNS

Exclusive designs



Mix & match floors & walls



Ultra-matt finish

eco-friendly collection



100% recyclable



Phthalate free



TVOC <10 µg/m³

designed just for you

4 SOLUTIONS

Looselay
Glue down
Acoustic
Compact

ProtecSol®2

Durability
Easy maintenance



Customisation with *my* Taralay





Contents

- 03. Taralay Impression**
The original & eco-designed range, created for you
- 04. A collection that serves its users**
- 05. 2 technical solutions**
- 06. Taralay Impression hop**
Eco-design implemented at each stage of the life cycle
- 10. Design concepts**
- 12. New designs and colours**
- 28. Taralay Impression palette**
LRV/NCS Table
- 31. Gerflor & the DSDC approach**
- 33. Technical data**

Find out more
[gerflor.fr](https://www.gerflor.fr)

Find us on social media:















Taralay Impression...

the original & eco-designed range, created for you

For multiple high traffic uses

 Healthcare	 Retirement homes	 Education	 Offices & government buildings	 Hospitality businesses	 Shops
---------------------------------------------------------------------------------------------------	---------------------------------------------------------------------------------------------------------	--------------------------------------------------------------------------------------------------	-----------------------------------------------------------------------------------------------------------------------	---------------------------------------------------------------------------------------------------------------	----------------------------------------------------------------------------------------------

1 collection 4 solutions

	 Compact Version Easy wheeling & indentation-resistant	 Acoustic Version High-performance sound insulation
 Glue-down installation	 Taralay Impression Compact	19 dB Taralay Impression Acoustic
 Looselay	Taralay Impression hop Compact	19 dB Taralay Impression hop Acoustic

Taralay Impression hop:
The easy solution for **new-builds or renovation projects**

... the answer to all your needs

A collection that serves its users

PROTECSOL®2, THE STAIN GUARD

- Reduces cleaning time & saves money
- Uses less water and fewer cleaning products (detergent etc.)
- Resistant to chemicals



Its water-repellent effect prevents products that stain from penetrating.



Stains get ingrained in all other floor covering products on the market.

Stain test

Marker pen / Eosin / Betadine



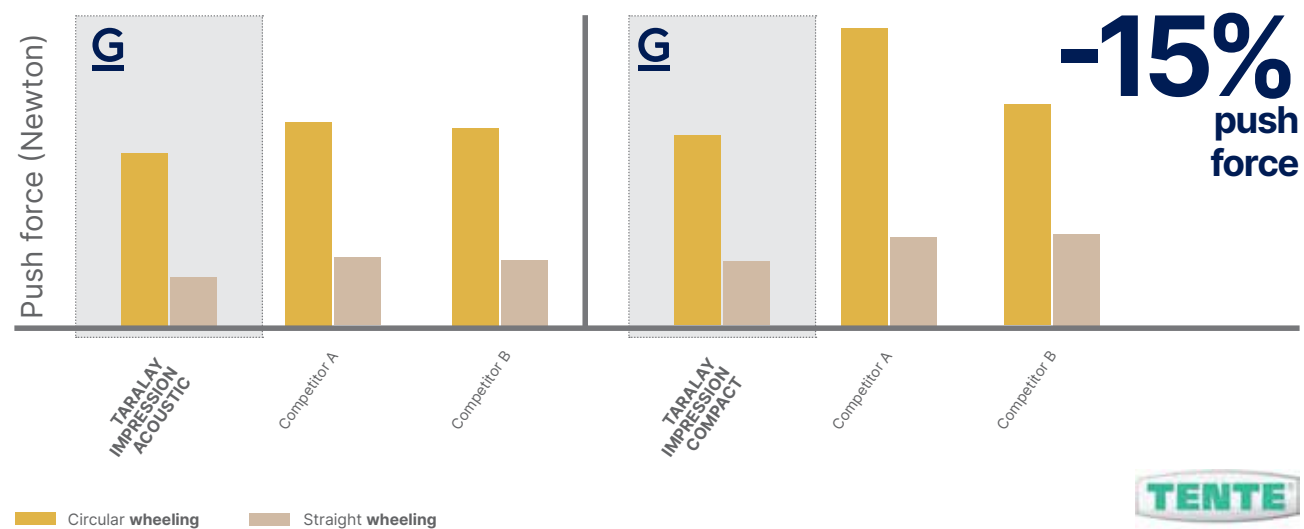
Results after cleaning

Using a neutral detergent	Taralay Impression	Printed flooring/ Transparent wear layer	Homogeneous flooring/ single-layer
After 10 mins			
After 1 hr			

Full stain resistance table available on request

REDUCED PUSH FORCE REQUIRED FOR WHEELING AROUND HEAVY LOADS

Comparison of Taralay Impression vs competitors*



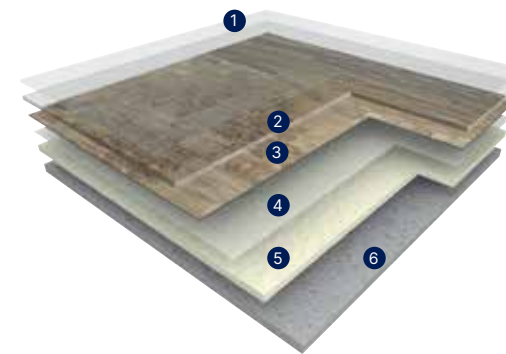
*Tests conducted by Tente®.

2 technical solutions

Taralay Impression – Glue-down installation

Enhanced durability to withstand heavy traffic usage

Over 20 million m² of flooring have been installed since the 1st generation of Taralay Impression. Brand new designs and colours with all the usual long-standing benefits: sustainable, easy to clean and available in a wide range of designs.



- 1 Protecsol² extra-matt surface treatment
 - 2 Transparent wear layer
 - 3 Design
 - 4 Fibreglass
 - 5 Compact interlayer
 - 6 High density foam (acoustic version)
- Available in a compact 8 dB or an acoustic 19 dB version

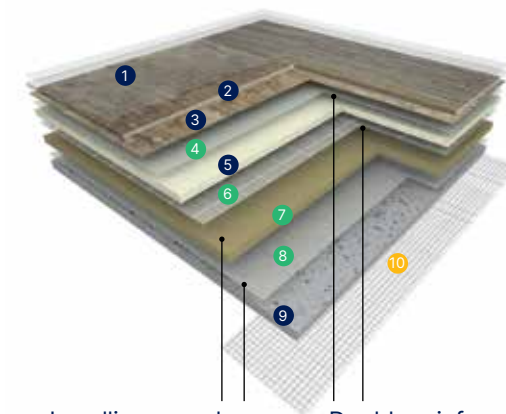
Taralay Impression hop – Looselay

NEW

EXCLUSIVE PRODUCT CONSTRUCTION, ESPECIALLY DEVELOPED FOR LOOSELAY INSTALLATION!

A stable and expansion-resistant looselay flooring

The **double** fibreglass + glass laid scrim reinforcement ensures excellent product maintenance. The looselay layer that is made of **recycled materials** combined with a **technical underlay** improves the product's adhesion to the floor.



- 1 Protecsol² extra-matt surface treatment
- 2 Transparent wear layer
- 3 Design
- 4 Fibreglass
- 5 Compact interlayer
- 6 Glass fiber grid
- 7 Calendered layer with recycled content
- 8 Technical underlay
- 9 High density foam (acoustic version)
- 10 hop holding tape

Available in a compact 8 dB or an acoustic 19 dB version

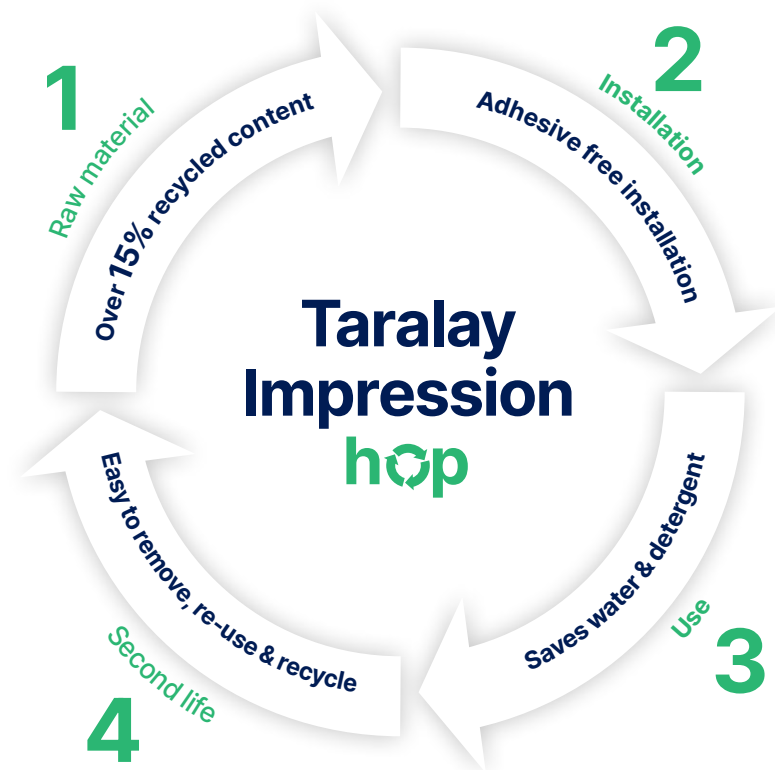
Levelling complex calendered layer + technical underlay = **looselay**

Double reinforcement fibreglass + glass fiber grid = **reinforced stability**

Eco-design valued at each stage of the life cycle

GERFLOR IS COMMITTED

to communicating transparently about the carbon impact of its products and focusing on eco-design, including the use of sustainable raw materials, the sustainability of its products and circular economy



The 4 stages of the life cycle

1 – Raw materials

23% Recycled content

✓ Phthalate-free*

✓ REACH REACH compliant



*Excluding recycled content

2 – Installation made easy in busy environments



Place the HOP holding tape where the rolls join
Code: 059E/Packaging: 50 ml/box



Reinforced holding tape:

- Durable
- Easy to position
- No transfer to surface underneath



Unroll



Adhesive free: less disruption (smell, noise, dust) and fewer risks of quality issues



Ready to walk on straight away



Can be walked on immediately

In a renovation project **the preparation time is reduced** or unnecessary


2 – Optimised installation means more projects finished faster

Eco-design valued at each stage of the life cycle

3 – Use Long-lasting performance


Protecsol®2 Protecsol²: stain resistant water-repellent surface saves water and detergent

 Withstands wheeling heavy loads (straight or circular) up to 500 kg

 Excellent resistance to indentation – 0.03 mm (compact)/ 0.08 mm (acoustic)

 Excellent stability, even during temperature changes: expansion < 0.03%


 Improved resistance to moisture

 TVOC < 10 micrograms/m³



4 – A second life made easier

-50% Removal time reduced by 50% in renovations, without damaging the surface underneath

 Uninstall and reuse:

- Flooring can be uninstalled without damaging either the product or the surface underneath
- Flooring can be re-used for another building

 Easy to recycle

- Qualifies for the **Second Life Programme**.
- Flooring is incorporated back into our production lines

FLOOR TO FLOOR A unique partnership with Paprec, recycling programmes that are certified by Eucertplast



FABRIQUÉ ET RECYCLÉ EN FRANCE



Accelerating recycling is essential for building a more circular economy. Preserving resources and reducing the carbon footprint of our business are our commitments for Sustainable Development.

Taralay Impression

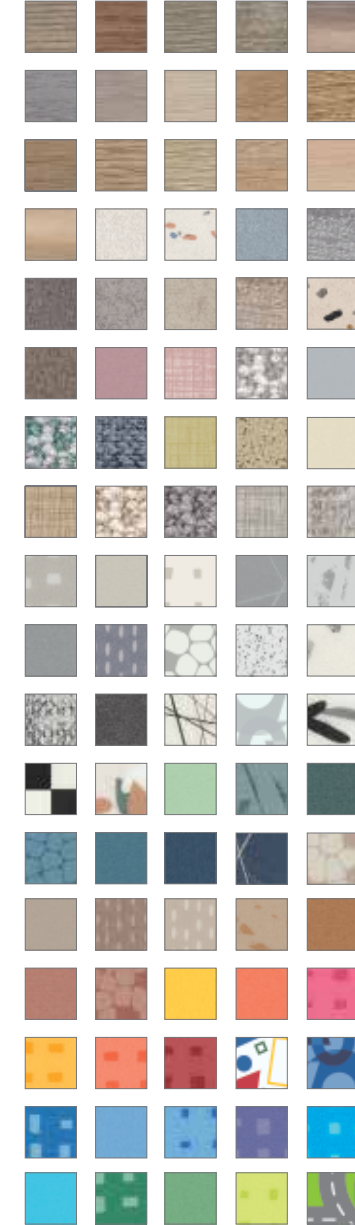
the original & eco-designed range, created for you

96 wood, mineral, textile effects and graphics that can be coordinated with and match our Taralay Premium, Tarastep, wall solutions, etc.

100% coordinated



96 designs



And even more with



Design concepts...

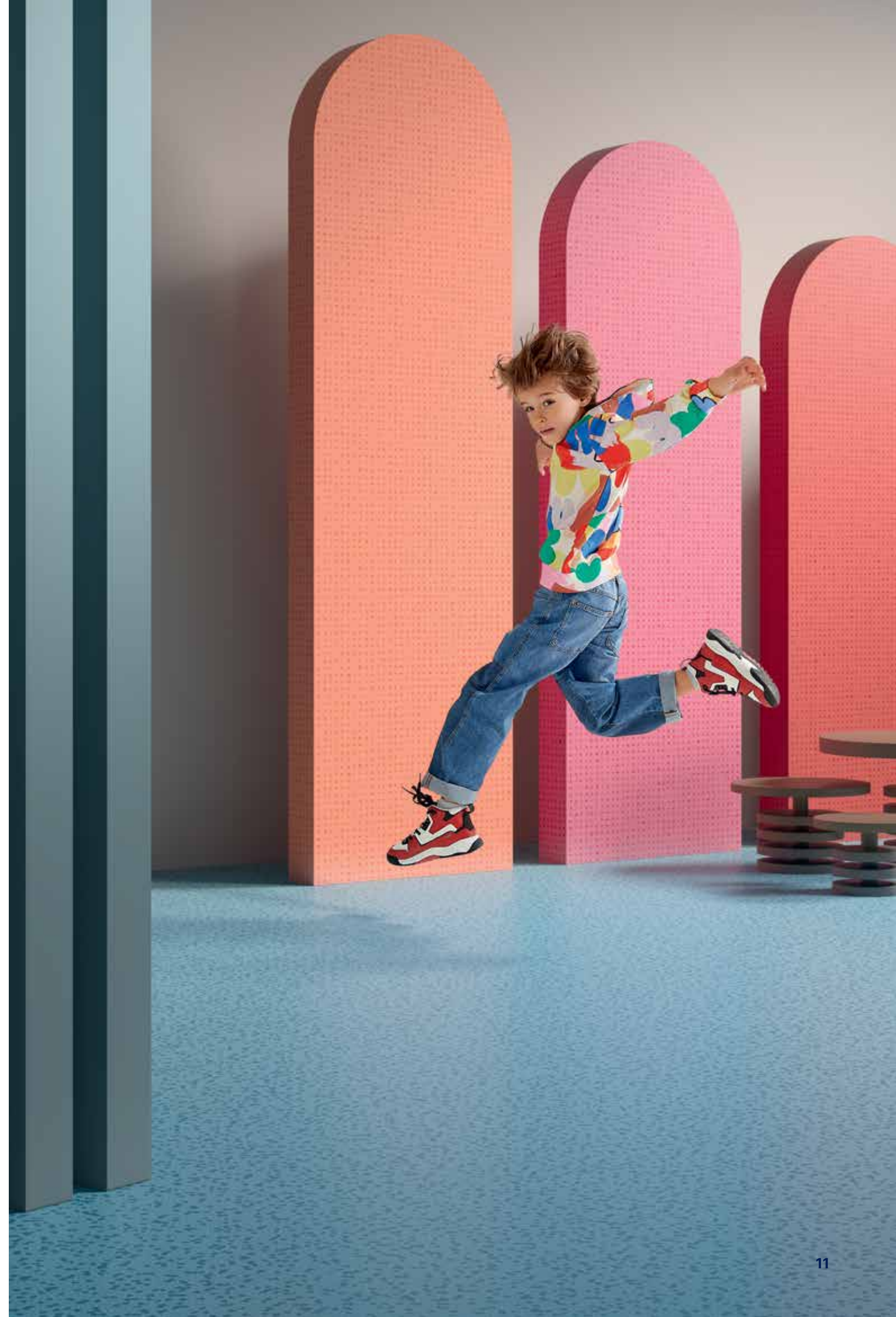
Black & White
Chic and retro



Happy
Fun and educational



Biophilia
Inspired by nature



The original palette

WOOD

ENHANCED
PERSPECTIVES

Added structure and textured effects with increased warmth make humans feel at one in their living areas with our new WOOD interpretations.



FABRIC EFFECT

The warmth and comfort of a design inspired by woven natural fibres in unassuming colours is a perfect match for soft and subtle vintage environments.

ATMOSPHERE

MINERALS

They are stylish and slightly retro: a play on harmony between neutral and colourful tones, shards of marble and polychrome shades... A pluralistic and radiant minerality.



NATURE

INSPIRED GRAPHICS

Nature is the intended choice of inspiration for these designs: gossamer leaves lifted up by the wind, lush tropical forests and delicate Nido patterns. All in all, a new verse in Mother Nature's song.



Wood Fusion



Wood Fusion Nature



Wood Fusion Nature 1104



Wood Fusion Nature
Scan scale: 5%

Raintree



Raintree Natural



Raintree Grey 1076



Raintree Natural 1077



Raintree Natural
Scan scale: 25%

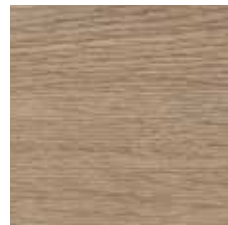
Habana 3D



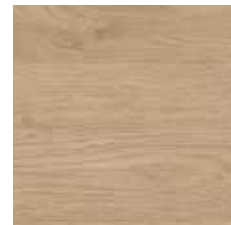
Habana 3D Blossom



Habana 3D Blossom 1100



Habana 3D Trinidad 1069



Habana 3D Vinales 1070



Habana 3D Blossom
Scan scale: 10%

Nature Oak



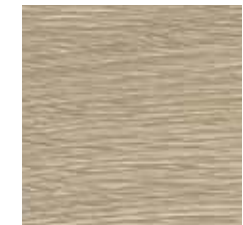
Nature Oak Clear



Nature Oak Dark 1056



Nature Oak Brown 1054



Nature Oak Blond 1053



Nature Oak Clear 1055



Nature Oak Clear
Scan scale: 10%

Rivau



Rivau Nature



Rivau Nature 1110



Rivau Nature
Scan scale: 30%

Terrazzo



Terrazzo Brescia



Terrazzo Black & White 1058



Terrazzo Napoli 1060



Terrazzo Brescia 1059

Rough



Rough Grey



Rough Grey 1029



Rough Beige 1028

Finesse



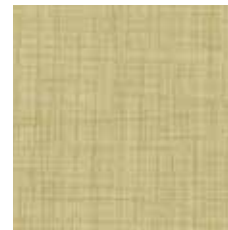
Finesse Brown



Finesse Nature 1064



Finesse Brown 1063



Finesse Paille 1065



Finesse Poudre 1066



Finesse Brown
Scan scale: 40%

Pure Wool



Pure Wool Beige



Pure Wool Beige 1073



Pure Wool Teal 1074



Pure Wool Taupe 1071



Pure Wool Grey 1072

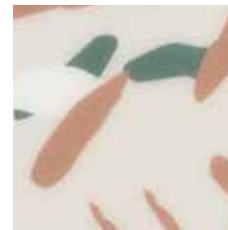


Pure Wool Beige
Scan scale: 40%

Envol



Envol Forest



Envol Forest 1099



Envol Black & White 1098



Envol Black & White
Scan scale: 30%

Jungle



Jungle Green/Uni Matt Dark Green



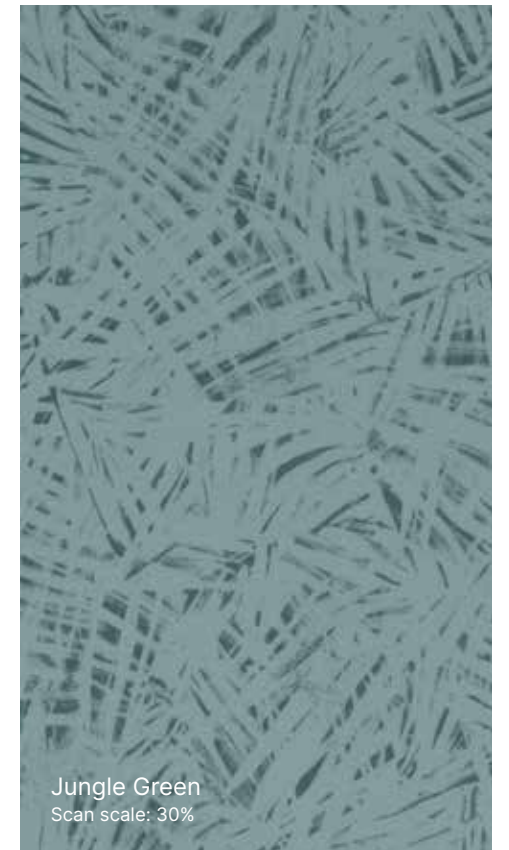
Jungle Grey 1040



Jungle Green 1039



Jungle Copper 1038

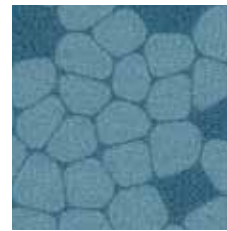


Jungle Green
Scan scale: 30%

Nido



Nido Brick 1036



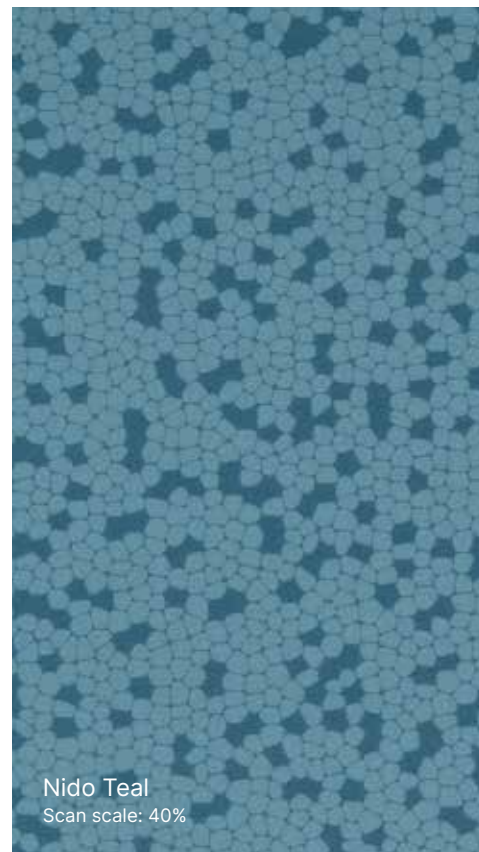
Nido Teal 1037



Nido Beige 1062



Nido Grey 1035

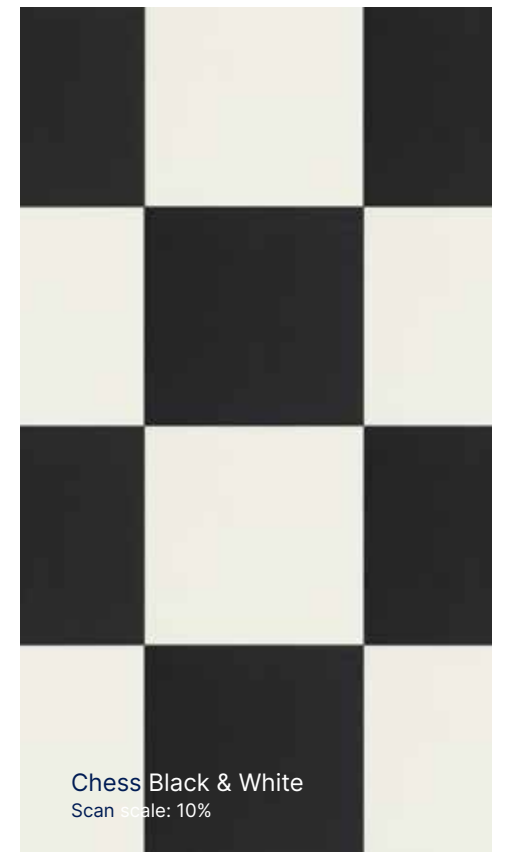


Nido Teal
Scan scale: 40%

Chess



Chess Black & White 1041



Chess Black & White
Scan scale: 10%

Happy



Happy Road 0923
Scan scale: 10%



Happy Road



Happy Form 1101
Scan scale: 5%



Happy Number Blue 1102
Scan scale: 5%



Happy Number Grey 1103
Scan scale: 5%

Customise your
Taralay Impression*

my Taralay Impression

colours

32

designs to be recoloured

design range

50

additional designs

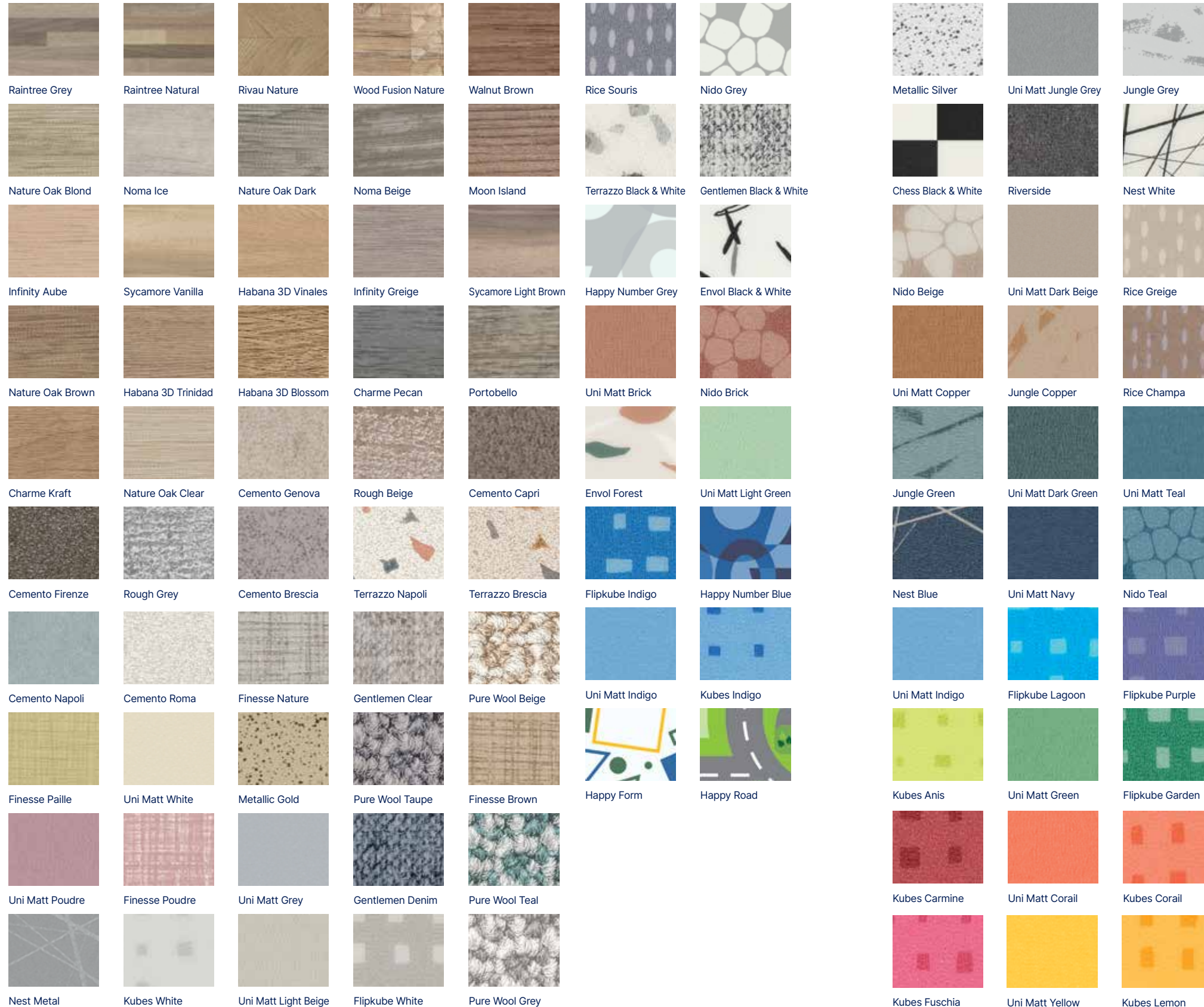
customisation

+

create your own design



Taralay Impression palette



Codes	Colours	LRV	NCS	DSDC Rating	Taralay Impression hop
0543	Cemento Brescia	32,5	4502-Y	1b	○
0524	Cemento Capri	21,8	5010-Y30R	1b	
1025	Cemento Firenze	22	5005-Y80R	1b	○
0523	Cemento Genova	43,1	3005-Y50R	1b	○
1024	Cemento Napoli	33,8	4502-B	1b	○
1026	Cemento Roma	37,8	3005-Y50R	1b	○
1093	Charme Kraft	26,9	4010-Y30R	2	○
0723	Charme Pecan	24,3	5502-R	-	
1041	Chess Black & White	36,7	1002-Y50R + 8000-N	-	
1098	Envol Black & White	44,4	1002-R	-	
1099	Envol Forest	48	1505-Y90R	-	○
1063	Finesse Brown	36	3010-Y50R	1b	
1064	Finesse Nature	37,6	3502-Y	1b	○
1065	Finesse Paille	44,5	3020-Y	1b	
1066	Finesse Poudre	40,5	3010-R10B	1b	
1043	Flipkube Garden	18,6	5030-G10Y	-	
1042	Flipkube Indigo	16,7	3050-R80B	-	
1044	Flipkube Lagoon	26,7	1565-B	-	
1075	Flipkube Purple	16,2	4030-R60B	-	
1045	Flipkube White	42,7	3005-Y80R	-	
1067	Gentlemen Black & White	34	3502-R	-	
0770	Gentlemen Clear	46,2	3002-R	1b	○
1068	Gentlemen Denim	23,2	4502-B	1b	
1069	Habana 3D Trinidad	24,7	4010-Y50R	2	○
1070	Habana 3D Vinales	35,5	3010-Y40R	1b	○
1100	Habana 3D Blossom	35,1	3010-Y40R	-	○
1101	Happy Form	61,3	1502-G50Y	-	
1102	Happy Number Blue	24,9	3040-R80B	-	
1103	Happy Number Grey	64,9	2500-N	-	
0923	Happy Road	56,9	1030-G50Y	-	
0720	Infinity Aube	47,9	3010-Y30R	1b	
0680	Infinity Greige	33,1	4005-Y20R	1b	○
1038	Jungle Copper	32,6	4010-Y50R	-	
1039	Jungle Green	23,6	4502-G	-	
1040	Jungle Grey	46,9	3000-N	-	
1046	Kubes Anis	51,3	1050-G60Y	-	
1031	Kubes Carmine	13,1	4040-R	-	
1027	Kubes Corail	30,4	2050-Y80R	-	
1030	Kubes Fuschia	20,2	2050-R20B	-	
1050	Kubes Indigo	30	2040-R80B	-	
1047	Kubes Lemon	52,9	1070-Y20R	-	
0755	Kubes White	64	1502-Y	-	
1048	Metallic Gold	43,1	3005-Y20R	-	
1049	Metallic Silver	49,2	3000-N	-	
0760	Moon Island	24,8	4010-Y30R	-	
1053	Nature Oak Blond	36,8	3005-Y50R	1b	○
1054	Nature Oak Brown	22,9	5010-Y30R	1b	
1055	Nature Oak Clear	41,2	3005-Y20R	1b	○
1056	Nature Oak Dark	25,5	5005-Y20R	1b	○
1051	Nest Blue	11,8	7010-R70B	-	
0745	Nest Metal	29,2	5500-N	-	○
1052	Nest White	54,8	2502-R	-	
1062	Nido Beige	47,6	2005-Y60R	-	
1036	Nido Brick	24,1	4020-Y70R	-	
1035	Nido Grey	62,1	1502-Y50R	-	
1037	Nido Teal	22,5	5010-R90B	-	
0519	Noma Beige	28,5	5005-Y20R	-	○
0373	Noma Ice	52	2002-Y50R	2	○
0773	Portobello	25,3	5005-Y20R	-	
1073	Pure Wool Beige	48,6	3005-Y50R	-	
1072	Pure Wool Grey	40	3005-R20B	-	
1071	Pure Wool Taupe	25	5005-Y80R	-	
1074	Pure Wool Teal	32,3	3502-R	-	
1076	Raintree Grey	24,5	5005-Y50R	-	
1077	Raintree Natural	31,4	5010-Y50R	-	
0736	Rice Champa	37,5	4010-Y30R	-	
0763	Rice Greige	48,5	3005-Y20R	-	
0737	Rice Souris	30,1	5000-N	-	
1110	Rivau Nature	30	4010-Y30R	-	○
1057	Riverside	13	6502-R	1b	○
1028	Rough Beige	37,8	3005-Y50R	-	○
1029	Rough Grey	34,2	4502-R	-	○
0725	Sycamore Light Brown	25,6	4010-Y30R	-	
0727	Sycamore Vanilla	31,1	3020-Y20R	-	
1058	Terrazzo Black & White	68	1502-Y50R	-	
1059	Terrazzo Brescia	52	2005-Y80R	-	
1060	Terrazzo Napoli	63,7	1502-R	-	○
1090	Uni Matt Brick	23	4020-Y70R	1a	
1089	Uni Matt Copper	21,3	4030-Y50R	1a	
1091	Uni Matt Corail	28,4	2050-Y80R	1a	
1088	Uni Matt Dark Beige	36,8	3005-Y50R	1a	○
1079	Uni Matt Dark Green	14,1	6005-B80G	1a	○
1080	Uni Matt Green	32,6	3030-G30Y	1a	
0832	Uni Matt Grey	43	3000-N	1a	○
1078	Uni Matt Indigo	34,1	2030-R80B	1a	○
1084	Uni Matt Jungle Grey	29	4502-R	1a	
1081	Uni Matt Lagoon	38,6	1050-B	1a	
1092	Uni Matt Light Beige	48,2	2502-Y	1a	
1082	Uni Matt Light Green	46,9	3010-G30Y	1a	
1083	Uni Matt Navy	9,1	7010-R70B	1a	
1086	Uni Matt Poudre	29,9	3020-R20B	1a	
1085	Uni Matt Teal	17,7	5010-R90B	1a	○
0848	Uni Matt White	64,3	1505-Y20R	1a	
1087	Uni Matt Yellow	53,7	1060-Y10R	1a	
1314	Walnut Brown	15,8	6020-Y40R	-	
1104	Wood Fusion Nature	28,1	4010-Y50R	-	○



Gerflor products help you to age well

These days, ageing well is a social challenge. In this context, supporting people who have dementia is the focus of numerous discussions.

What is dementia? Dementia is a syndrome that occurs in numerous neurological diseases (one of the most well-known being Alzheimer's disease), caused by progressive degeneration of certain neurons. These pathologies affect the memory, thoughts, behaviour and the ability to perform daily activities.

Gerflor is committed to helping towards ageing comfortably by developing designs and colours to suit these medical conditions.

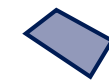
BELOW ARE SOME KEY POINTS FOR CHOOSING A SUITABLE FLOORING:



Contrasting colours

Sections of the same area (floors, walls, accessories) must be in contrasting colours in order to improve the three-dimensional perception of the different spaces and thus encourage movement. It is also important to take into account the light reflectance value (LRV*) of the different sections.

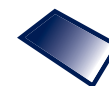
> All the LRVs in Gerflor ranges are available on our website and our communication tools.



'Soft' and almost plain patterns

Heavily patterned flooring or flooring with busy patterns should be avoided, as well as the colour black, which could lead to blocking reactions due to visual barriers. We therefore recommend choosing soft patterns.

> Many designs and colours in Gerflor's ranges have semi-plain or almost plain patterns that are perfectly suitable.



Matt flooring

In addition to the more realistic look, matt flooring is perceived as more secure. In fact, shiny floors can look wet, making people with dementia hesitant and increase the risk of falling.

> The latest-generation surface treatments developed by Gerflor (Protecsol® 2, Evercare™ in particular) give the products a matt appearance.



Acoustic comfort

You should opt for acoustic products that will reduce ambient noise and create a more calm and peaceful environment.

> Many of the Gerflor collections provide sound insulation. For example, Taralay Impression offers 19 dB (acoustic version) and 8 dB (compact version) sound insulation products.



Accredited products

Gerflor wanted to have its products (notably Taralay Impression) validated and accredited by the DSDC, **Dementia Services Development Centre**. This organisation is an independent and internationally recognised centre of knowledge and expertise dedicated to improving the lives of people with dementia.

Our customer feedback speaks volumes

'Taralay Impression is a high quality product that is very easy to maintain; The range we chose gave us the hotel style we were looking for.'

Belley Hospital

'The product was installed over 10 years ago. The floor covering withstands traffic really well. On top of that, just plain water gives a perfect clean.'

Rochefort Hospital





'I really liked the collection, in terms of aesthetics, and everybody else likes it. Also, the flooring is easy to clean and is stain-resistant.'

City of Mulhouse

'It's easy to wheel around heavy loads on Taralay Impression. It is also extremely hard wearing.'

Mulhouse & South Alsace Region Hospital Group

Technical data

			Taralay Impression Acoustic	Taralay Impression Compact	Taralay Impression hOp Acoustic	Taralay Impression hOp Compact
Description						
Total thickness	EN ISO 24346	mm	3.35	2.00	4.35	2.30
	ASTM F386-02	inch	0.13"	0.08"	0.17"	0.09"
Thickness of wearlayer	EN ISO 24340	mm	0.65	0.70	0.70	0.70
	ASTM F410-02	inch	0.026"	0.028"	0.028"	0.028"
Weight	EN ISO 23997	g/m ²	2825	2635	3670	3125
	-	lbs/sq.ft	6.23	5.81	8.09	7.05
Width/length of sheet	EN ISO 24341	cm / lm	200 / 25	200 / 25	200 / 20	200 / 20
	-	feet - inch	6'6" / 82'	6'6" / 82'	6'6" / 65'7"	6'6" / 65'7"
Phthalate free	-	-	OK	OK	OK	OK
Classification						
Norm/product specification	-	-	EN ISO 11638	EN ISO 10582	EN ISO 11638	EN ISO 10582
European classification	EN ISO 10874	class	34 - 42	34 - 43	34 - 42	34 - 43
Fire rating	EN 13501-1	class	Bfl-s1	Bfl-s1	Bfl-s1	Bfl-s1
Static electrical propensity	EN 1815	kV	< 2	< 2	< 2	< 2
Slip resistance wet: ramp test with oil	EN 16165 app B	classe	R10	R10	R10	R10
Performances						
Wear resistance	EN 660.2	mm ³	≤ 2.0	≤ 2.0	≤ 2.0	≤ 2.0
Wear group	QB 30	group	T	T	T	T
Type binder content	EN ISO 10582	type	-	I	I	I
Dimensional stability (requirement)	EN ISO 23999	%	≤ 0.40	≤ 0.40	≤ 0.40	≤ 0.40
Dimensional stability (measured value)	-	%	0,08	0,08	0,03	0,03
Residual indentation (requirement)	EN ISO 24343-1	mm	≤ 0.20	≤ 0.10	≤ 0.20	≤ 0.10
Residual indentation (average measured value)	-	mm	≈ 0.08	≈ 0.03	≈ 0.08	≈ 0.03
Impact sound insulation	EN ISO 717-2	dB	19	8	19	8
Castor chair test (type H)	ISO 4918	-	OK	OK	OK	OK
Thermal conductivity	EN ISO 10456	W/(m.K)	0.25	0.25	0.25	0.25
Colour fastness	EN 20 105 - B02	degree	≥ 6	≥ 6	≥ 6	≥ 6
Surface treatment	-	-	PROTECSOL® 2	PROTECSOL® 2	PROTECSOL® 2	PROTECSOL® 2
Chemical products resistance ⁽¹⁾	EN ISO 26987	-	OK	OK	OK	OK
Environment						
Recycled content (average)	-	-	17%	14%	23%	23%
Recyclability	-	-	100%	100%	100%	100%
EPD	-	-	Available	Available	Available	Available
Health						
Anti-bacterial activity (E. coli - S. aureus - MRSA) ⁽²⁾	ISO 22196	-	> 99% inhibits growth	> 99% inhibits growth	> 99% inhibits growth	> 99% inhibits growth
Antiviral activity (human coronavirus) after 2h ⁽²⁾	ISO 21702	-	> 99.7 % virucidal activity	> 99.7 % virucidal activity	> 99.7 % virucidal activity	> 99.7 % virucidal activity
TVOC after 28 days	ISO 16000-6	microgram/m ³	< 10	< 10	< 10	< 10
Certification			Floorscore®	Floorscore®	Floorscore®	Floorscore®
CE marking						
			EN 14041	  		

(1) Regarding the resistance to chemicals, please download the corresponding leaflet from our website.

(2) The implementation of an effective cleaning regime is the most important defence against infection.

Product description and technical data sheets on gerflor.com

Installation and Maintenance Guidelines, Complementary ranges available on our Gerflor website.

 Rubber leaves indelible stains on vinyl floorings; do not use mats with rubber backing and replace tubular furniture feet with those made of PVC or polyamide. Place mats of sufficient length at entrances to reduce outside sources of dirt.

IMPORTANT: The information contained in this document is valid from 01/02/2026 and is subject to change at any time without notice. In the context of constantly changing technology, our customers are responsible, prior to any use, for checking with us that this document is the version in force.

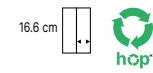
Taralay Impression



Habana 3D Blossom 1100



Scale: 20%



Raintree Natural 1077



Scale: 20%



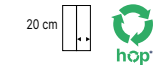
Nature Oak Brown 1054



Wood Fusion Nature 1104



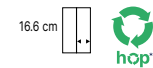
Scale: 20%



Walnut Brown 1314



Habana 3D Trinidad 1069



Taralay Impression



Nature Oak Clear 1055



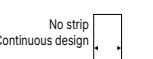
Rivau Nature 1110



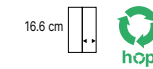
Scale: 20%



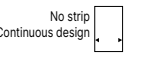
Infinity Aube 0720



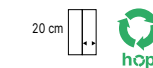
Nature Oak Blond 1053



Sycamore Vanilla 0727



Charme Kraft 1093



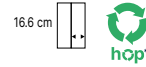
Habana 3D Vinales 1070



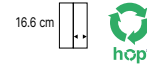
Taralay Impression



Noma Ice 0373



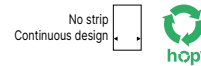
Noma Beige 0519



Portobello 0773



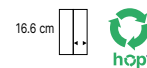
Infinity Greige 0680



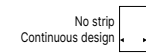
Raintree Grey 1076



Nature Oak Dark 1056



Sycamore Light Brown 0725



Moon Island 0760



Charme Pecan 0723



Nest White 1052



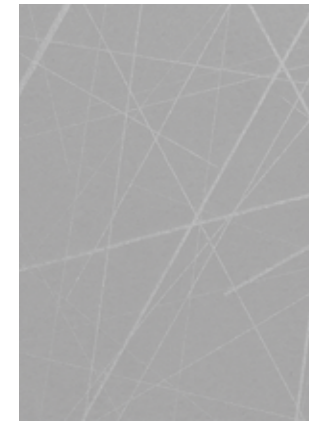
Chess Black & White 1041
Scale: 10%



Envoy Black & White 1098
Scale: 30%



Happy Number Grey 1103
Scale: 5%



Nest Metal 0745**



Nido Grey 1035



Uni Matt Jungle Grey 1084



Jungle Grey 1040



Rice Souris 0737



Nido Beige 1062



Uni Matt Dark Beige 1088



Flipkube White 1045



Rice Champa 0736



Rice Greige 0763



Uni Matt Light Beige 1092



Kubes White 0755

Taralay Impression



Riverside 1057



Cemento Firenze 1025



Cemento Capri 0524



Cemento Genova 0523



Gentlemen Denim 1068



Pure Wool Beige 1073



Gentlemen Black & White 1067



Cemento Brescia 0543



Cemento Napoli 1024



Cemento Roma 1026



Pure Wool Teal 1074



Pure Wool Grey 1072



Gentlemen Clear 0770



Pure Wool Taupe 1071



Terrazzo Brescia 1059



Terrazzo Black & White 1058



Terrazzo Napoli 1060



Finesse Poudre 1066



Finesse Nature 1064



Finesse Brown 1063



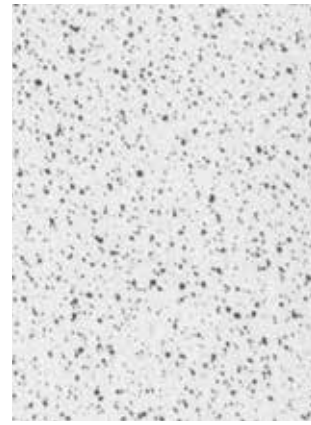
Finesse Paille 1065



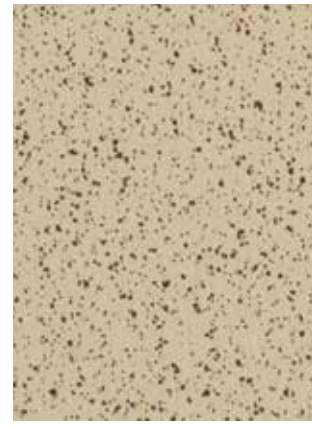
Rough Beige 1028



Rough Grey 1029



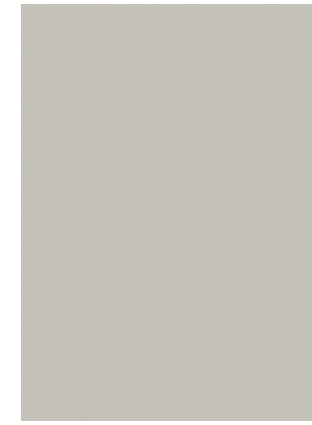
Metallic Silver 1049**



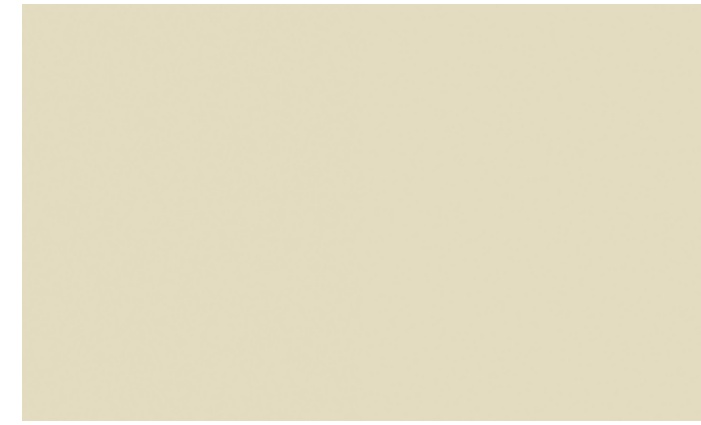
Metallic Gold 1048**



Uni Matt Poudre 1086



Uni Matt Grey 0832



Uni Matt White 0848

Taralay Impression



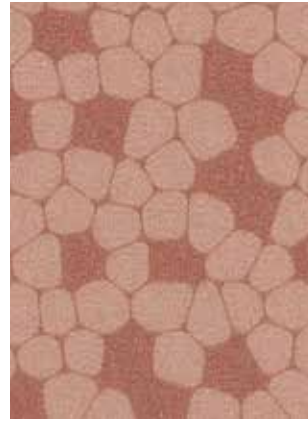
Uni Matt Copper 1089



Jungle Copper 1038



Uni Matt Brick 1090



Nido Brick 1036



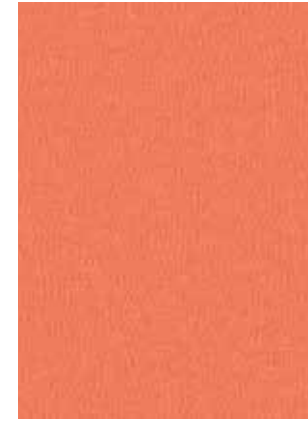
Kubes Lemon 1047



Uni Matt Yellow 1087



Kubes Corail 1027



Uni Matt Corail 1091



Uni Matt Dark Green 1079 



Jungle Green 1039



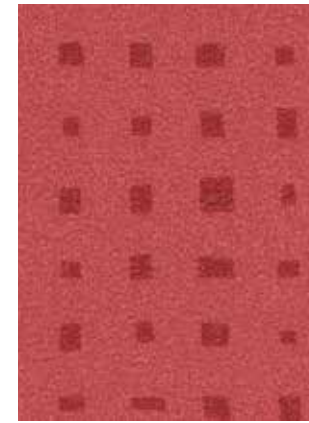
Envol Forest 1099
Scale: 30%



Kubes Anis 1046



Kubes Fuschia 1030



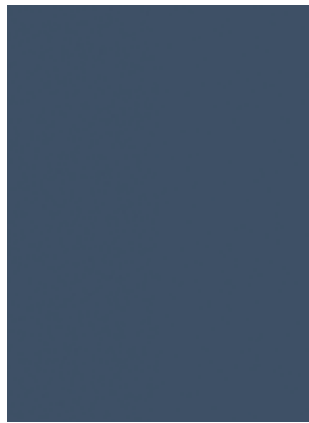
Kubes Carmine 1031



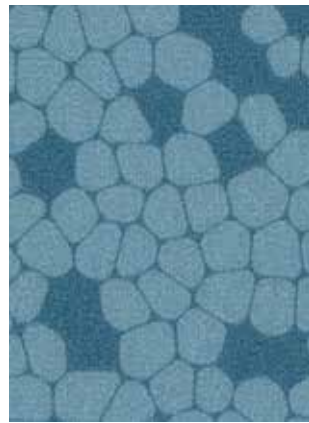
Happy Form 1101
Scale: 5%



Nest Blue 1051



Uni Matt Navy 1083



Nido Teal 1037



Uni Matt Teal 1085



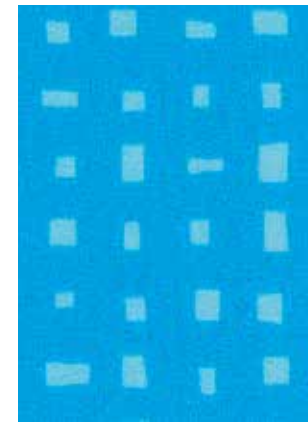
Happy Road 0923
Scale: 5%



Kubes Indigo 1050



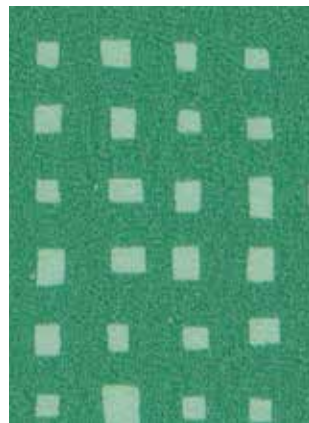
Uni Matt Lagoon 1081



Flipkube Lagoon 1044



Uni Matt Light Green 1082



Flipkube Garden 1043



Uni Matt Green 1080



Flipkube Indigo 1042



Uni Matt Indigo 1078








Flipkube Purple 1075



Happy Number Blue 1102
Scale: 5%




	Taralay Impression Acoustic		Taralay Impression Compact		Taralay Impression hop Acoustic		Taralay Impression hop Compact	
Description								
Total thickness	EN ISO 24346	mm	3.35	2.00	4.35	2.30		
	ASTM F386-02	inch	0.13"	0.08"	0.17"	0.09"		
Thickness of wearlayer	EN ISO 24340	mm	0.65	0.70	0.70	0.70		
	ASTM F410-02	inch	0.026"	0.028"	0.028"	0.028"		
Weight	EN ISO 23997	g/m ²	2825	2635	3670	3125		
	-	lbs/sq.ft	6.23	5.81	8.09	7.05		
Width/length of sheet	EN ISO 24341	cm / lm	200 / 25	200 / 25	200 / 20	200 / 20		
	-	feet - inch	6'6" / 82'	6'6" / 82'	6'6" / 65'7"	6'6" / 65'7"		
Phthalate free	-	-	OK	OK	OK	OK		
Classification								
Norm/product specification	-	-	EN ISO 11638	EN ISO 10582	EN ISO 11638	EN ISO 10582		
European classification	EN ISO 10874	class	34 - 42	34 - 43	34 - 42	34 - 43		
Fire rating	EN 13501-1	class	Bfl-s1	Bfl-s1	Bfl-s1	Bfl-s1		
Static electrical propensity	EN 1815	kV	< 2	< 2	< 2	< 2		
Slip resistance wet: ramp test with oil	EN 16165 app B	classe	R10	R10	R10	R10		
Performances								
Wear resistance	EN 660.2	mm ³	≤ 2.0	≤ 2.0	≤ 2.0	≤ 2.0		
Wear group	QB 30	group	T	T	T	T		
Type binder content	EN ISO 10582	type	-	I	I	I		
Dimensional stability (requirement)	EN ISO 23999	%	≤ 0.40	≤ 0.40	≤ 0.40	≤ 0.40		
Dimensional stability (measured value)	-	%	0,08	0,08	0,03	0,03		
Residual indentation (requirement)	EN ISO 24343-1	mm	≤ 0.20	≤ 0.10	≤ 0.20	≤ 0.10		
Residual indentation (average measured value)	-	mm	≈ 0.08	≈ 0.03	≈ 0.08	≈ 0.03		
Impact sound insulation	EN ISO 717-2	dB	19	8	19	8		
Castor chair test (type H)	ISO 4918	-	OK	OK	OK	OK		
Thermal conductivity	EN ISO 10456	W/(m.K)	0.25	0.25	0.25	0.25		
Colour fastness	EN 20 105 - BO2	degree	≥ 6	≥ 6	≥ 6	≥ 6		
Surface treatment	-	-	PROTECSOL® 2	PROTECSOL® 2	PROTECSOL® 2	PROTECSOL® 2		
Chemical products resistance ⁽¹⁾	EN ISO 26987	-	OK	OK	OK	OK		
Environment								
Recycled content (average)	-	-	17%	14%	23%	23%		
Recyclability	-	-	100%	100%	100%	100%		
EPD	-	-	Available	Available	Available	Available		
Health								
Anti-bacterial activity (E. coli - S. aureus - MRSA) ⁽²⁾	ISO 22196	-	> 99% inhibits growth	> 99% inhibits growth	> 99% inhibits growth	> 99% inhibits growth		
Antiviral activity (human coronavirus) after 2h ⁽²⁾	ISO 21702	-	> 99.7% virucidal activity	> 99.7% virucidal activity	> 99.7% virucidal activity	> 99.7% virucidal activity		
TVOC after 28 days	ISO 16000-6	microgram/m ³	< 10	< 10	< 10	< 10		
Certification			Floorscore®	Floorscore®	Floorscore®	Floorscore®		
CE marking								
	EN 14041	-						

(1) Regarding the resistance to chemicals, please download the corresponding leaflet from our website.
 (2) The implementation of an effective cleaning regime is the most important defence against infection.




Product description and technical data sheets on gerflor.com

Installation and Maintenance Guidelines, Complementary ranges available on our Gerflor website.

 Rubber leaves indelible stains on vinyl floorings: do not use mats with rubber backing and replace tubular furniture feet with those made of PVC or polyamide. Place mats of sufficient length at entrances to reduce outside sources of dirt.

IMPORTANT: The information contained in this document is valid from 01/02/2026 and is subject to change at any time without notice. In the context of constantly changing technology, our customers are responsible, prior to any use, for checking with us that this document is the version in force.

we care / we act our commitments for 2030

 climate -30% CO₂ scopes 1, 2, 3 in tons eq. CO ₂ , vs 2019 Science Based Targets ⁽¹⁾	 resources 75% biobased, mineral and recycled content ⁽²⁾ 30% recycled content ⁽³⁾	 circularity 65 000 tons annual volume recycled ⁽⁴⁾ 45% looselay ⁽⁵⁾	 health & well-being 100% products better than Indoor Air Quality standards ⁽⁶⁾ 95% sales covered by EPD ⁽⁷⁾	 people 30% women ⁽⁸⁾ 40% internal mobility ⁽⁹⁾ Towards 0 accident ⁽¹⁰⁾
----------------------------------------------------------------------------------------------------------------------------------------------------------------------------------------------------------------------------------------	------------------------------------------------------------------------------------------------------------------------------------------------------------------------------------------------------------------------------------	-------------------------------------------------------------------------------------------------------------------------------------------------------------------------------------------------------------------	---------------------------------------------------------------------------------------------------------------------------------------------------------------------------------------------------------------------------------------------------------------------	------------------------------------------------------------------------------------------------------------------------------------------------------------------------------------------------------------------------------------------------

More details: 1. Scopes 1, 2 & 3, in absolute value, market-based. Trajectory approved by SBTi (Science Based Targets Initiative). 2. Origin of raw materials for the entire Floor & Wall portfolio, on average, by weight; including 15% virgin salt, a primary element in vinyl manufacturing. Compared to 71% in 2024. 3. Average content in the Floor & Wall vinyl portfolio, by weight. Compared to 21% in 2024. 4. Recycled in our factories and recycling units. Compared to 59 040 tons in 2024. 5. % of Floor activity with non-glued products, easy to remove, easy to re-use. Compared to 40% in 2024. 6. 100% of vinyl and linoleum sold to the building market below 100 micrograms/m³ (TVOC 28 days). 7. % of Floor & Wall activity covered by Environmental Product Declarations (EPD). Compared to 44% in 2024. 8. % women in our global workforce and among our managers. Compared to respectively 26% and 27% in 2024. 9. % job openings filled with internal hires worldwide. Compared to 25% in 2024. 10. Towards 0 accident: Lost time accident per million hours worked: below 3 vs 8,9 in 2024, for Gerflor employees worldwide.

